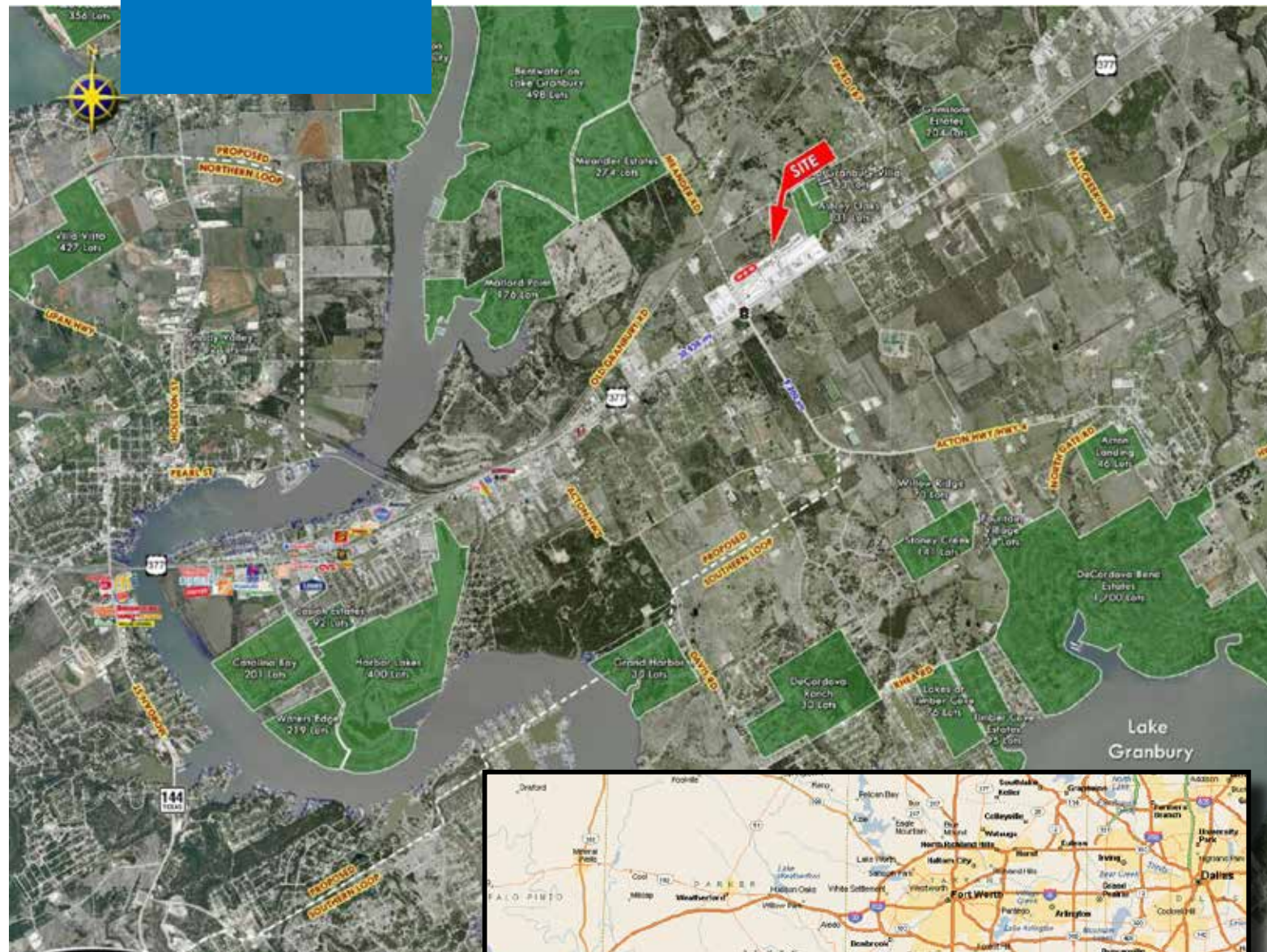


# For Info

## LUTON RANCH

3902 Highway 377  
Granbury, Texas



# For Info

## LUTON RANCH

3902 Highway 377  
Granbury, Texas



### FEATURES & AVAILABILITY

- 1,200 -40,000 SF Retail Space Available
- Pad Sites Available
- Strong National Tenant Lineup
- Signalized Intersection
- Highly traveled regional intersection
- Join these fine retailers:

### DEMOGRAPHICS

	10 Minutes	20 Minutes	30 Minutes
Population	20,486	43,754	59,869
Average Income	\$67,872	\$69,957	\$70,266
Growth 2000-2011	36.1%	29.8%	29.6%

### TRAFFIC COUNTS

Highway 377: 34,159 vpd  
Highway 4: 77,000 vpd



### FOR LEASING INFORMATION CONTACT:

Mason Bishop • 972.774.2507  
mason.bishop@transwestern.net

Ben Witten • 972.774.2593  
ben.witten@transwestern.net



Transwestern DALLAS | 5001 Spring Valley Road, Suite 400W | Dallas, TX 75244 | 972.744.2500 | www.transwestern.net

*The information provided herein was obtained from sources believed reliable; however, Transwestern makes no guarantees, warranties, or representations as to the completeness or accuracy thereof. The presentation of this property is submitted subject to errors, omissions, change of price or conditions, prior sale or lease, or withdrawal without notice.*

### FOR LEASING INFORMATION CONTACT:

Mason Bishop • 972.774.2507  
mason.bishop@transwestern.net

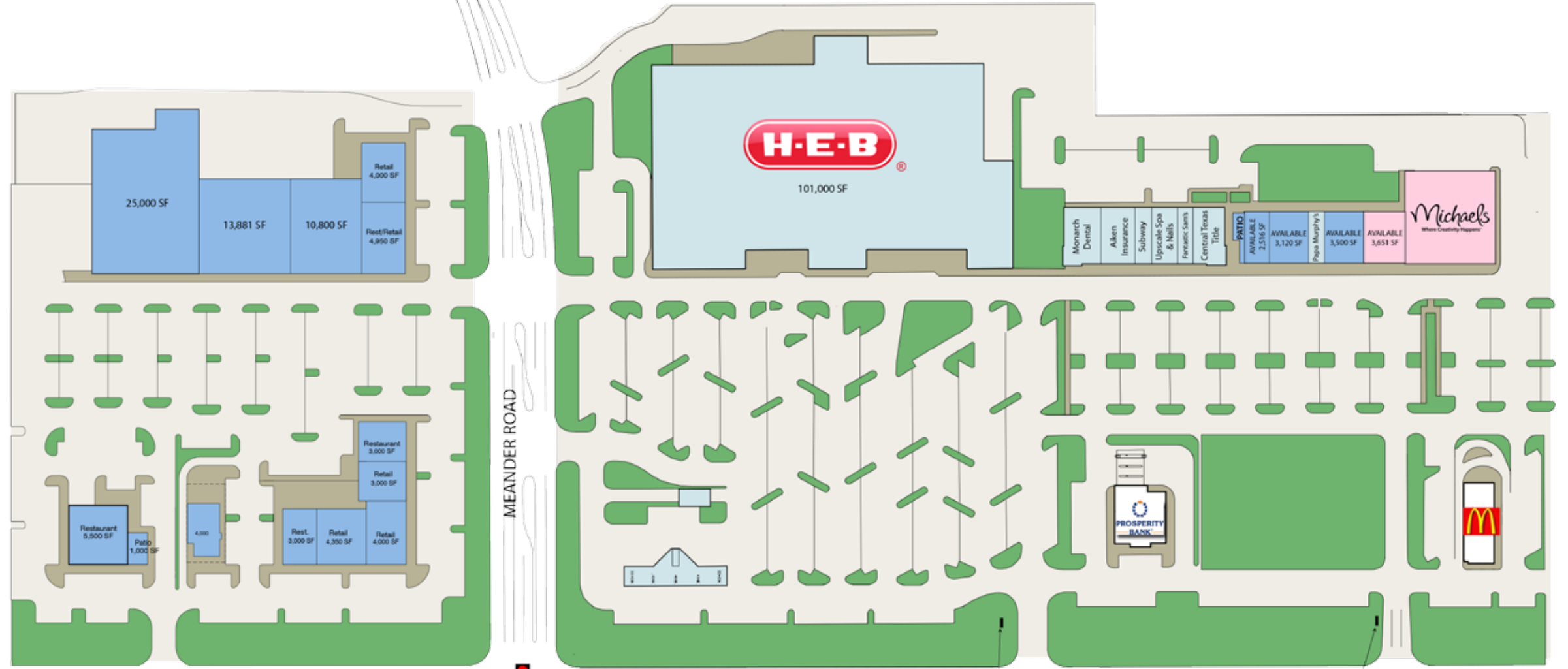
Ben Witten • 972.774.2593  
ben.witten@transwestern.net



Transwestern DALLAS | 5001 Spring Valley Road, Suite 400W | Dallas, TX 75244 | 972.744.2500 | www.transwestern.net

*The information provided herein was obtained from sources believed reliable; however, Transwestern makes no guarantees, warranties, or representations as to the completeness or accuracy thereof. The presentation of this property is submitted subject to errors, omissions, change of price or conditions, prior sale or lease, or withdrawal without notice.*

# Luton Ranch



U.S. HIGHWAY 377

25 Ft. Tall HEB Pylon Sign

25 Ft. Tall Pylon Sign



## Luton Ranch

Granbury, Texas